

Behavioral Health Policy Academies

March 28, 2024



NATIONAL ACADEMY
FOR STATE HEALTH POLICY

nashp.org



Agenda

1. Background
2. Behavioral Health Workforce Policy Academy
3. Children's Behavioral Health Policy Academy
4. Application and Timeline
5. Question & Answer

About NASHP

The National Academy for State Health Policy (NASHP) is a nonpartisan organization committed to developing and advancing state health policy innovations and solutions.

NASHP supports state leaders by providing technical assistance, publishing and disseminating research and analyses, sharing best practices, and bringing new health policy ideas across executive and legislative branches of state government.



NASHP's Focus on Behavioral Health

- Rising behavioral health needs among all ages, exacerbated by COVID-19
- Individuals and families often lack access to needed behavioral health care
- States and health systems face workforce shortages, misalignment across systems, and challenges in designing and implementing quality improvement approaches
- NASHP is offering two policy academies to support states in this area:
 - Behavioral Health Workforce
 - Children's Behavioral Health

What's a policy academy?

Policy academies bring together small, interagency teams to develop work plans around a specific policy topic over a series of months or years. These opportunities offer states direct technical assistance from NASHP staff and peer-based engagement across states.



What's in it for states?

Policy academies are a valuable investment for officials, offering opportunities for knowledge sharing, networking, professional development, peer support, innovation, and accountability.



What's in it for states?

NASHP is here to lend an extra hand to enhance your effectiveness, strengthen agency capacity, and assisting with your ultimate goal of improving health outcomes for residents in your states.





Behavioral Health Workforce Policy Academy



Why the focus on the behavioral health workforce now?

- Limited access to high-quality behavioral health interventions, exacerbated by increased demand coupled with workforce shortages and maldistribution presents a significant challenge to state efforts to modernize their behavioral health systems.
- Current workforce is aging and experiencing burnout
- Newer models, like CCBHCs and collaborative care, offer opportunities to rethink how the behavioral health workforce is utilized in care

Through a two-year policy academy, NASHP will support up to five state teams to develop and implement behavioral health workforce plans.

Potential Focus Areas

Behavioral Health Workforce Policy Academy



Incorporating
the unlicensed,
skilled
workforce into
teams



Developing new
workforce types
and credentials



Administrative
and regulatory
simplification

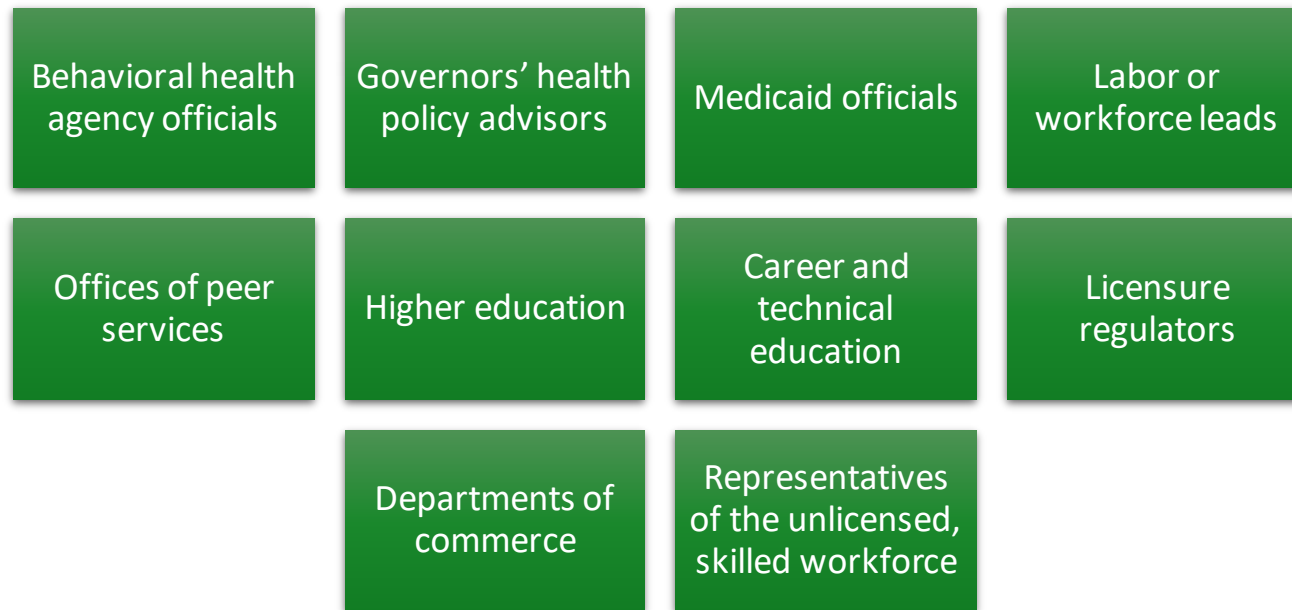


Financing and
payment for
optimal team-
based care

States may address multiple focus areas or identify additional priorities through their application or project planning process.

State Teams

Behavioral Health Workforce Policy Academy



Five senior officials with decision making authority



Technical Assistance and Peer Learning

Behavioral Health Workforce Policy Academy

During the two-year policy academy, up to five state teams will participate in:

Activity	Timing/Frequency
Individual check-in calls	Bimonthly
Multi-state calls	Quarterly
In-person meetings	September 2025 and September 2026
Technical assistance support	Ongoing



Children's Behavioral Health Policy Academy

Objective

Children's Behavioral Health Policy Academy

- National youth behavioral health crisis
- Gaps in the children's behavioral health continuum of care
 - Roughly half of all children with behavioral health needs do not receive needed care
 - Increased pediatric mental health-related emergency department visits and hospital "boarding" of children and youth with behavioral health needs
- States face challenges in addressing these needs and implementing improvements

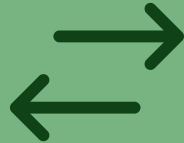
Through a two-year policy academy, NASHP will support up to six state teams to implement policy strategies that strengthen the continuum of care for children and youth who are at risk of or have serious behavioral health needs

Potential Focus Areas

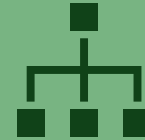
Children's Behavioral Health Policy Academy



Strengthening
the array of
programs,
services, and
supports



Improving
alignment
across child-
serving
systems



Enhancing
screening,
assessment,
and referral
systems



Supporting the
behavioral
health
workforce and
infrastructure

States may address multiple focus areas or identify additional priorities through their application or project planning process.

State Teams

Children's Behavioral Health Policy Academy

- State teams of 3-5 members must include:
 - State Medicaid agency staff
 - State behavioral health agency staff
 - State Title V MCH program staff
- Optional additional partners include, but are not limited to:
 - State child welfare agency
 - State juvenile justice agency
 - Families/people with lived experience
 - State intellectual/developmental disabilities agency
 - State education agency
 - Medicaid managed care plan(s)
 - Provider and hospital groups (e.g., pediatricians, family physicians, children's hospitals, residential treatment providers)

Technical Assistance and Peer Learning

Children's Behavioral Health Policy Academy

During the two-year policy academy, up to six state teams will participate in:

Activity	Timing/Frequency
Individual check-in calls	At least two per year
Webinars	At least two during the policy academy
In-state visit	Varies (based on the state team's availability)
In-person meeting	September 2025
Closed listserv	Ongoing (June 2024-May 2026)
Technical assistance support	Ongoing (June 2024-May 2026)



Applications and Timeline

Application Process

1. Email NASHP with questions and to receive the brief application form
2. Submit applications to NASHP by 5 p.m. ET on Friday, April 26, 2024
3. NASHP will notify all state applicants in May 2024

NASHP Contacts:

- Behavioral Health Workforce: Rebekah Falkner at rfalkner@nashp.org
- Children's Behavioral Health: Olivia Randi at orandi@nashp.org

Timeline

March 19, 2024	Request for applications released
March 28, 2024	Informational webinar
April 26, 2024	State applications due
May 2024	Selected state teams notified
June 2024	Policy academy kick-off calls
June-May 2026	Targeted technical assistance and peer-to-peer learning



Questions?

Thank you!



NATIONAL ACADEMY
FOR STATE HEALTH POLICY

nashp.org



[@NASHPhealth](https://twitter.com/NASHPhealth)



NASHP | National
Academy for State
Health Policy